



CLICK HERE TO ACTIVATE

LESSON 
PART 1



UNIT 3



Trees Also Can Speak

Warm Up



A. Identify the trees shown in the pictures and write their names.



B. Count the plants/trees in your garden or that are grown in your balcony.

Or

Count the trees in the park or garden closest to your house.

Read and Enjoy



Characters : **Neem Tree**, **Peepal Tree**, **Eucalyptus Tree**, **Pine Tree**, an **Old Man**, a **Young Lady** and a **Young Man** (Assistant of the old man), **Another young man** (environmentalist), **Middle-aged Lady** (environmentalist) (All the characters in this play are fictitious. A forest scene on stage.)

Narrator : We all know that plants have life. They breathe, grow and prepare food. But they cannot move from one place to another or speak like us.

Here's a play about a strange forest where trees can speak to one another and express their thoughts and feelings. Probably we can understand this only in silence. (The Narrator exits.)

Neem Tree : This is a fine sunny morning. I love to **sway** in the cool breeze.

Peepal Tree : Oh yes. I also like to watch my leaves dance when the breeze blows.

Eucalyptus Tree : Our Green Forest is a beautiful place ! We enjoy life here. Under the bright blue sky, by the **gushing** clear stream, our forest is truly like heaven.

Other Trees : Right. We all agree with you.

Pine Tree : The bushes, other plants, birds and animals are all part of our big family. And of course, humans are our friends. It's our duty to keep this planet fit and the air clean for them. Isn't that so ?

Other Trees : Oh yes. Very true.

Eucalyptus Tree : Now let's enjoy the weather and listen to the singing of birds. The music of our **rustling** leaves is also sweet.

Peepal Tree : Sunshine on our faces and all over is soothing. It also helps us look **gorgeous** !

All Trees : Yes ! (After a few years ...)

Neem Tree : I am so tired.

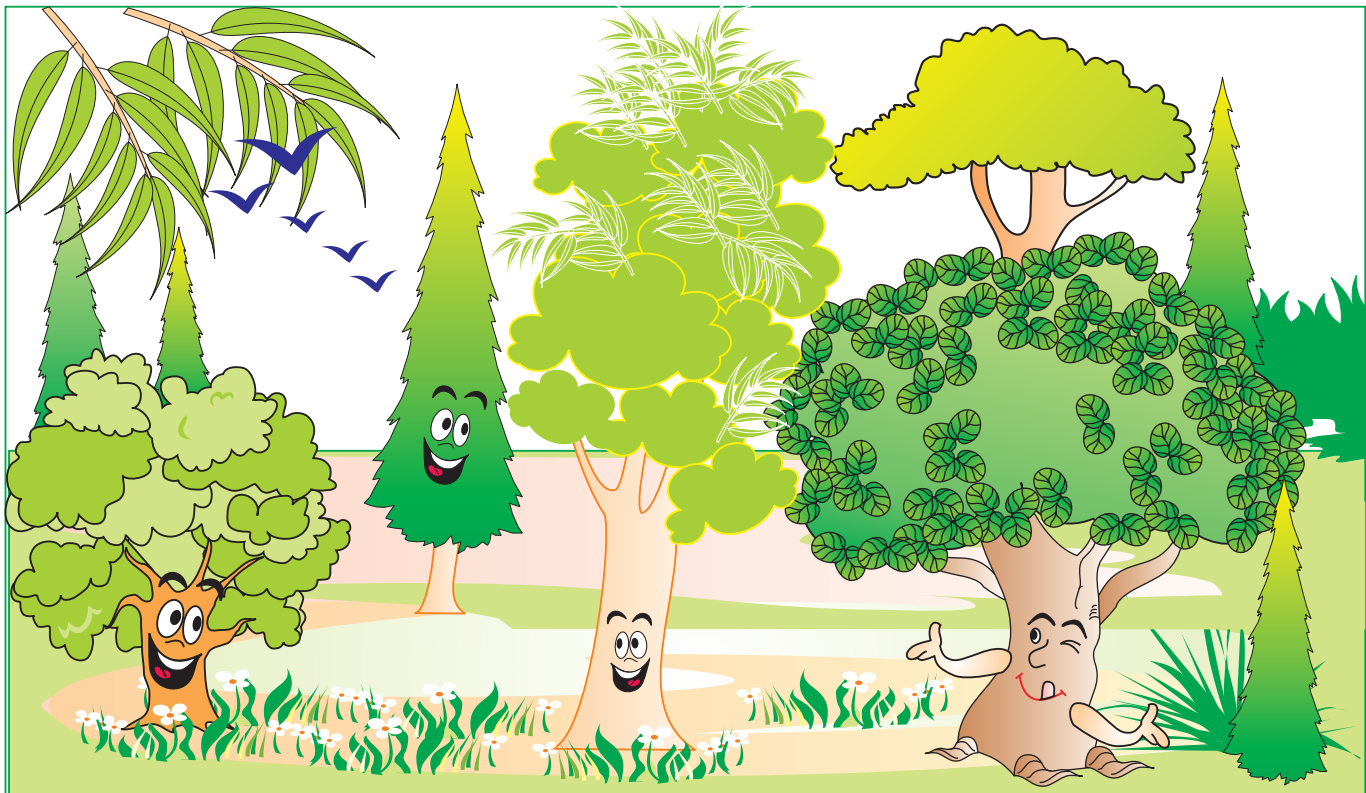
Peepal Tree : Me, too.

sway : move slowly from side to side or backward and forward

gushing : flow in a rapid and plentiful stream

rustling : making a soft sound caused by the movement of leaves

gorgeous : beautiful



Eucalyptus Tree : Life is **tough** these days. All of us have to work very hard nowadays.

Pine Tree : The amount of carbon dioxide in the air has increased a lot. In order to keep the air clean, we have to toil these days. Can anyone tell me why is it so ?

Peepal Tree : Well, I've heard from the butterflies and birds that bring messages from different places that the situation is bad. Many trees have been cut down to make buildings and structures. So, with fewer number of trees, we are **burdened** with more work.

Neem Tree : Oh yes. We have to **absorb** more carbon dioxide from the air and **release** more oxygen to maintain the balance. Other **pollutants** and more dust in the air make life more difficult. I've heard that the number of vehicles on the roads has gone up. It means more air pollution.

Eucalyptus Tree (sighs) : Gone are the days when our faces would glisten and glow and we sang **merrily** in sunshine.

Pine Tree : I hardly see smiling faces of trees these days. Moreover, we have to send our roots further down the soil for water. The water table has gone down because a lot of underground water is drawn out for humans and for the construction work.

Neem Tree : Our Green Forest isn't what is used to be. The **sparkling** stream has turned into a drain as it carries all the waste from nearby places.

Peepal Tree : Let me tell you friends that very soon we may also be **brutally** chopped down.

tough : difficult, hard

burdened : loaded heavily

absorb : soak up, take in

release : let off

pollutants : waste matter that contaminates the air, water or soil

merrily : happily

sparkling : shining brightly with flashes of sunlight

brutally : cruelly

multi-storeyed apartment : a building with multiple floors above ground

drenched : thoroughly wet

acid rain : a form of rain that contains harmful gases and pollutants absorbed from polluted air

survive : continue to live

approaching : coming nearer

Pine Tree : Quite possible. A little birdie told me yesterday that some people are planning to build a **multi-storeyed apartment** and highway over here.

All Trees : Oh ! That's sad news. I wish we could walk and run away from here.

Neem Tree : A factory may also be built here. You never know.

Eucalyptus Tree : Why don't these humans realise that we are their true friends ? We make this planet worth living for them.

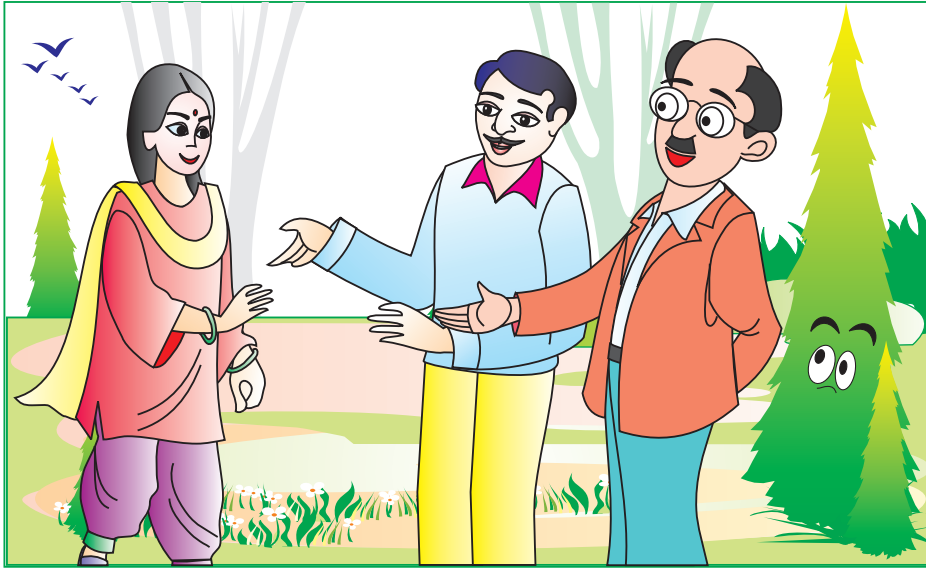
Peepal Tree : The worst part is that when it started raining last evening I was very disappointed. I was so glad to see dark clouds but when I got **drenched** in the rain I realised that it was **acid rain**. It is bad for our health.

All Trees : Yes, acid rain is bad for us.

Neem Tree : What can you expect ? With all the pollutants in the air, the raindrops turn acidic when they drop down and absorb all that, before they reach us.

Pine Tree : How long can we **survive** this way ? Hush ! Hush ! I can hear some people **approaching**.

(Two men and a woman approach.)



Old Man : I have already paid money for this land. We'll make multi-storeyed buildings here.

Young Lady : Sir, let's provide **facilities** like a club, gym, pool and all day water and power supply for the residents.

Old Man : We'll make good profit. People who buy **apartments** over here will readily pay a good amount to us.

Assistant : Yes, sir. Yes, madam.

Old Man : Let's go. Begin the work by next week.

Young Lady : Yes, sir. *(They leave together.)*

All Trees : Oh !

Pine Tree : Our end is close by.

All Trees : Everyone is upset now.

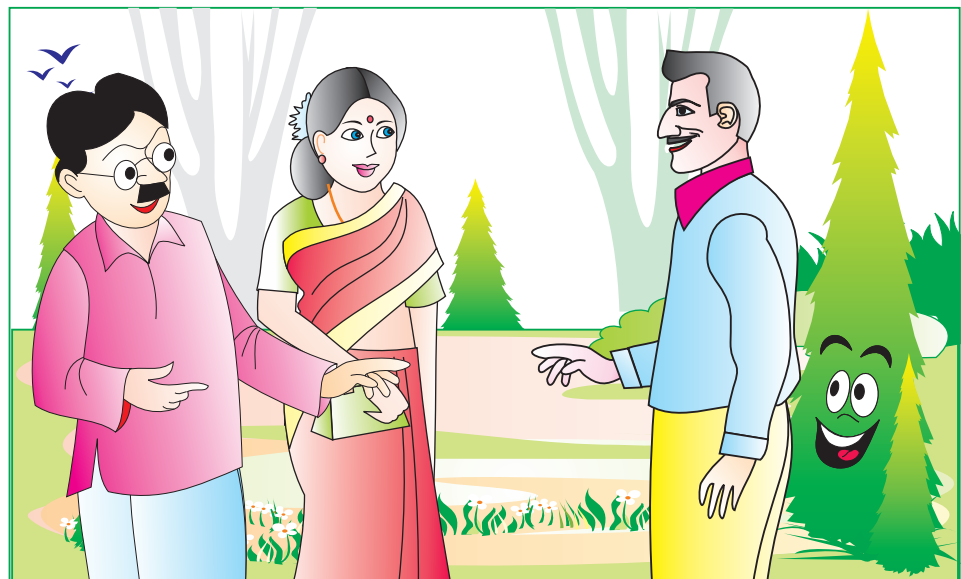
Neem Tree : I feel **miserable**. Quiet everyone ! I can hear some footsteps.

(A group of two young men and a middle-aged woman approach.)

Young Man : Look at this Green Forest. Isn't it beautiful ? We will never allow this to be cut down. We are environmentalists and we will fight to save these trees.

Another Young Man : I often come here for nature walks. Families and children come here for picnics. Some artists come here and make beautiful paintings.

Middle-aged Lady : Right. This forest and the trees are so important for us. The animals and birds will also have nowhere to go. I am clear about it. We'll go to the court. Why should the forest be destroyed ? Let's get orders from the court to stop any construction work that may be taken up here.



facilities : something built to afford a service

apartments : a room or a group of rooms designed for use as a house

miserable : unhappy

Young Man : Yes. We'll do that. (*They leave together. After a week*)

Pine Tree : Good news! Green Forest will not be cut down !

Eucalyptus Tree and Neem Tree : Great news !

Peepal Tree (*to the pine Tree*) : Who told you that ?

Pine Tree (*proudly*) : Well, I have my reliable sources. A little birdie told me that the court has ordered that no construction will take place here. The environmentalists have saved us. All the people are talking about it. We are all safe here.

All Trees : God bless the environmentalists. Humans should understand that they are closest to God only when they are close to nature.

(*All bow and leave the stage.*)

Narrator : Let us join hands to save the trees and forests so that we can save our planet earth.

Read and Understand



A. Tick (✓) the correct option to complete the following sentences.

1. The Eucalyptus Tree felt that the music of _____ was sweet.

(a) a piano

(b) a flute

(c) rustling leaves

(d) a stream

2. The amount of _____ in the air has increased.

(a) oxygen

(b) hydrogen

(c) carbon dioxide

(d) nitrogen

3. The _____ brought messages for the trees.

(a) butterflies and birds

(b) humans

(c) wind

(d) sunlight

4. Many trees had been cut down to make_____.

(a) national parks

(b) sanctuaries

(c) buildings and structures

(d) lakes

5. The sparkling stream had turned into a_____.

(a) gushing river

(b) lake

(c) drain

(d) fountain

B. Answer the following questions.

1. What was the duty of trees according to the Pine Tree?
2. What were the two main reasons behind increase of pollution in the air according to the Peepal Tree and the Neem Tree?
3. Why did the water table go down?
4. 'That's sad news.' What was the 'sad news' for the trees?
5. Name any two activities that people enjoyed doing in the Green Forest.
6. Why did the environmentalists want to save the Green Forest? Write two reasons.
7. Why were the trees happy at the end of the play?
8. Do you think that trees are truly our friends? Why should we support the environmentalists? Give two reasons in support of your answer.

C. HOTS

1. What would you like to do for your neighbourhood in order to save it from air pollution, sound pollution and water pollution? Suggest at least three solutions.

Fun with Grammar



Sentences

Read the following group of words.

Help in trees us ways many

This group of words does not convey any meaning. Now, let's rearrange the words.

Trees help us in many ways.

The above group of words conveys a complete meaning.

So, a group of words that makes complete sense is called a **sentence**. It begins with a capital letter and ends with a full stop (.), except questions.

Subject - Predicate

A sentence consists of two parts. The part that consists of the name of a person, place, animal or the thing that we speak about is called the **subject** of the sentence.

The words we use to talk about the subject is called the **predicate**.

The **predicate** always has a verb.

Examples: 1. The forest has many trees.
 subject predicate

2. The butterflies and birds brought messages for the trees.
 subject predicate

A. Rearrange the following words to form meaningful sentences. Remember to begin each sentence with a capital letter and end it with a full stop.

1. lived animals many and birds in forest the
2. brought little a birdie sad news trees for the
3. environmentalists some the forest saved

The following are different kinds of sentences.

◆ A sentence that makes a statement about the subject is called an **assertive sentence**. It ends with a full stop (.).

Example: Trees are our friends.

◆ A sentence that asks a question is an **interrogative sentence**. It ends with a question mark (?).

Example: Why were the trees worried?

◆ A sentence that expresses some strong feeling or emotion is called an **exclamatory sentence**. It ends with an exclamation mark (!).

Example: Hurrah! We have won the match!

◆ When a sentence conveys a request, advice, order or command, it is called an **imperative sentence**.

Example: Close the door. Do not go out in the sun, the temperature is 45°C.

B. Read the following sentences and state their kind.

1. Many trees were cut down to make buildings and structures. _____
2. Why don't the humans realise that trees are their true friends? _____
3. Good news! Green Forest will not be cut down! _____
4. Write neatly to get good marks. _____

LET'S SPELL

Fill in the missing letters to form complete words. You may use the words given in the box.

reliable further balance realise approach fictitious
construction increased gorgeous environment

1. ___ic___t___o___s
2. ___o___g___us
3. ___n___r___s___
4. ___a___an___
5. f___r___e___
6. ___e___l___s___
7. ___p___r___c___
8. c___s___u___t___n
9. ___nv___r___m___t
10. ___el___b___

VOCABULARY

Word Power

When we compare two persons or things, we use the comparative form of adjectives, like **good** → **better**, **smooth** → **smoother**, **pretty** → **prettier** and **difficult** → **more difficult**.

A. Write the comparative forms of the following adjectives and use any four in sentences of your own.

- | | | | |
|-----------|-------|-----------|-------|
| 1. bad | _____ | 2. able | _____ |
| 3. costly | _____ | 4. harsh | _____ |
| 5. rich | _____ | 6. easy | _____ |
| 7. sweet | _____ | 8. dark | _____ |
| 9. bright | _____ | 10. clean | _____ |

B. Write the comparative forms of the following adjectives.

- | | | | |
|----------------|-------|--------------|-------|
| 1. intelligent | _____ | 2. beautiful | _____ |
| 3. diligent | _____ | 4. careful | _____ |
| 5. strong | _____ | 6. weak | _____ |
| 7. slow | _____ | 8. fast | _____ |

LET'S READ

Read the following passage :

A golden-chain tree is a small tree that blooms in spring. The flowers of the tree look like chains of yellow flowers dripping from its branches. The golden-chain tree is usually 12 to 15 feet high. It has yellow pea like flowers and bright green leaves. The flowers are six to ten inches long. The trees are planted in moist soil that is well drained. The trees are grown away from windy areas of very hot places. The golden-chain trees do not survive in hot and very humid wet regions.

Now answer these questions.

1. When does the golden-chain tree bloom?
2. Describe the flowers of the golden-chain tree.
3. What is usually the height of the golden-chain tree?
4. What kind of soil is good for growing golden-chain trees?
5. What two kinds of places should be avoided for growing golden-chain trees?



LET'S PRACTISE

A. Follow your teacher while he/she is saying and pronounce the words correctly.

1. phoenix
2. confusion
3. offend
4. bona fide
5. finale
6. software
7. profession



B. Read the following words.

fill, fight, photo, paragraph

Note that the underlined letters are pronounced as 'fa' whether they are written as 'f' or 'ph'.

C. Fill in the blanks with 'f' or 'ph' to complete the following words.

- | | |
|--------------------|---------------|
| 1. al ___ abet | 2. ___ ish |
| 3. ___ ase | 4. dol ___ in |
| 5. ___ inal | 6. ___ inish |
| 7. ___ ysician | 8. or ___ an |
| 9. ___ ame | 10. kni ___ e |
| 11. ___ otogra ___ | 12. li ___ e |
| 13. autogra ___ | 14. ___ rame |



LET'S CONVERSE

Read the following conversation and enact it out with your partner in the class.

Moni : Hello Ayesha, how was your Sunday ?

Ayesha : Hello. Oh, Sunday was great! I went for a nature walk with my family.

Moni : Really ? What is nature walk, by the way ?

Ayesha : A walk in natural surroundings is a nature walk. An ideal place is a forest or a hilly place with streams, according to me.

Moni : Where did you go for the nature walk ?

Ayesha : We went to the Green Forest. The tall trees, the greenery all around and a clear stream in the forest helped us relax. We were so close to nature.

Moni : How does a nature walk help us ?

Ayesha : Well, well, it relaxes our mind and helps us improve our ability to focus. One can enjoy the beauty of nature away from the hustle and bustle of a city.

Moni : In that case, I'll also ask my family to go for a nature walk to the Green Forest next week.

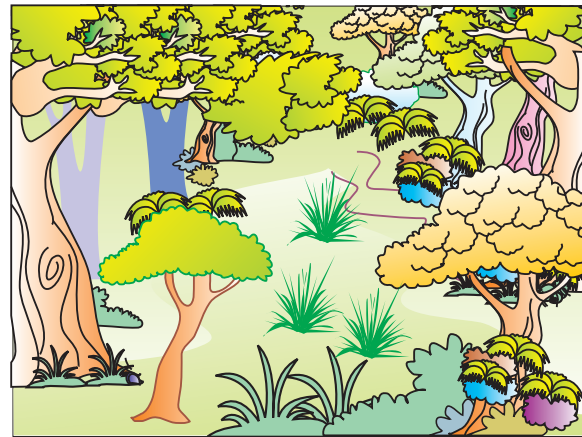
Ayesha : Sure.

RHYME TIME

Read aloud the following poem and then recite it in a group in the class.

A forest has a green carpet,
Its trees reach out to high skies,
We're forever busy and we fret,
Peace and relaxation in nature lies.

Let's go to the woods,
Listen to the voices of trees and the breeze,
It will uplift our moods,
God's here, and our worries will cease.



Based on your understanding of the above poem, answer the following questions orally.

1. What do you understand by 'green carpet' of the forest ?
2. Who is forever busy ?
3. How does one feel when one is close to nature ?
4. When we go to the woods what should we listen to ?
5. Who lives amidst nature ?
6. Think of your own rhyming words for :
(a) skies (b) busy (c) relaxation (d) woods (e) trees

WRITING SKILLS

Transcription

Rewrite the given passage neatly in your notebook. Mention the kind of each sentence.

Trees and forests are very important for us. The animals and birds will also have nowhere to go without them. Let's go to the court. Why should forests be destroyed for the construction of all kinds of buildings and skyscrapers?

Composition

Add your own words to complete the following sentences. Also state their kind.

1. I love to _____ . ()
2. I also like to _____ . ()
3. Life is _____ . ()
4. It's our duty to _____ . ()
5. Why can't you _____ ? ()

HOMEWORK

Imagine you went to the Green Forest for a nature walk with your family. Write a diary entry and describe what you saw there, how you felt and what did you like the most. You may begin by writing...

Today I went to the Green Forest in the morning with my family for a ...

PROJECT WORK

Work in groups of four to collect pictures and information about any special tree of your choice. Also make a poster and other things to be displayed on your class Display Board. It would be a good idea if some of you also write four lines on that tree.

VALUE CORNER / LIFE SKILLS

All living creatures including trees need care and should be treated with understanding.

We all want to meet God, but we cannot find Him in noise and restlessness. God is the friend of silence. See how in nature - trees, flowers, grass grow in silence; see how the stars, the moon and the sun move in silence ... We all need silence to be able to reach out to every soul.

- Mother Teresa