



CLICK HERE TO ACTIVATE



1

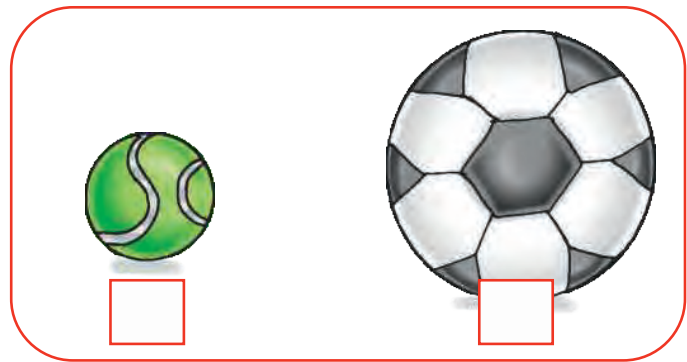
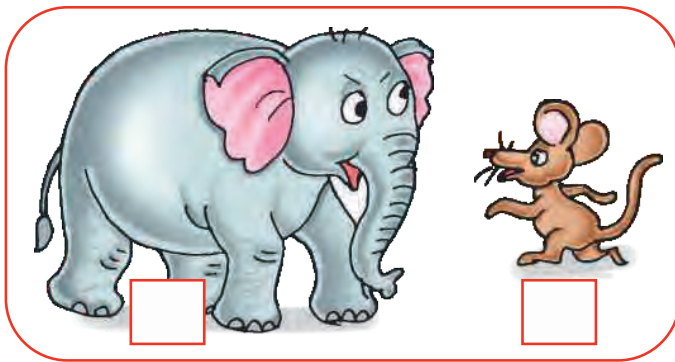
+ - X ÷ + - X ÷ + - X ÷ + - X ÷



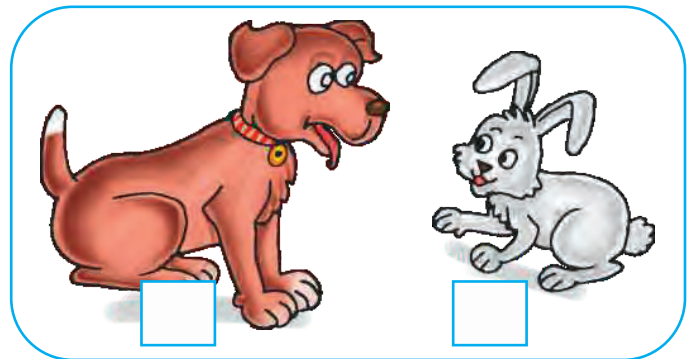
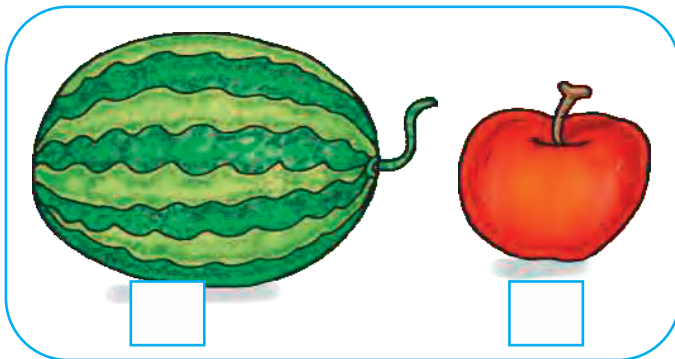
PRE-NUMBER CONCEPTS

READY ... STEADY

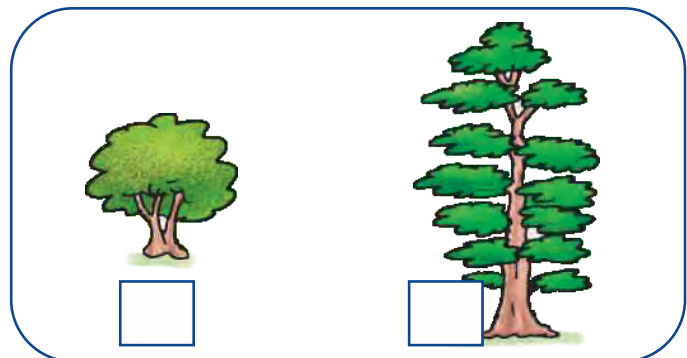
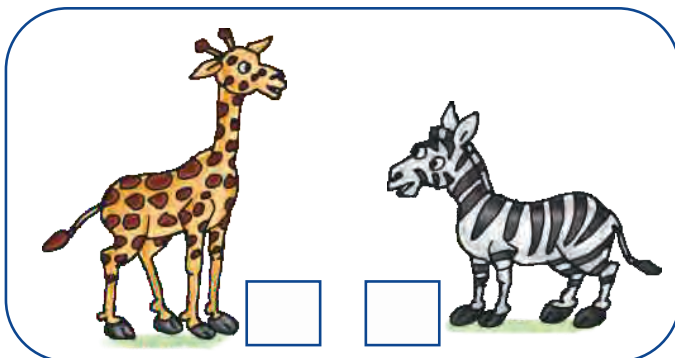
Write 'B' for big and 'S' for small in the box.



Write 'H' for heavy and 'L' for light in the box.



Write 'T' for tall and 'S' for short in the box.

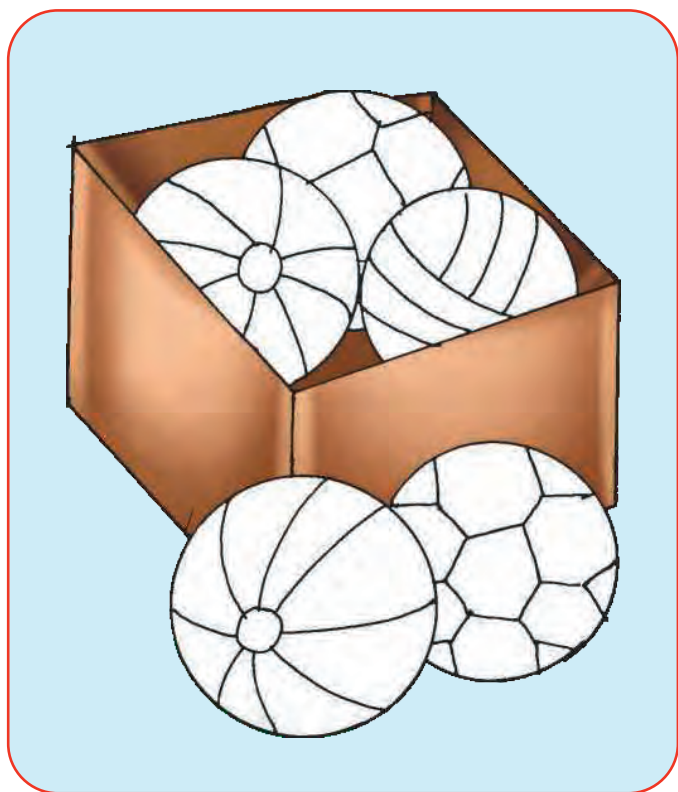


INSIDE AND OUTSIDE

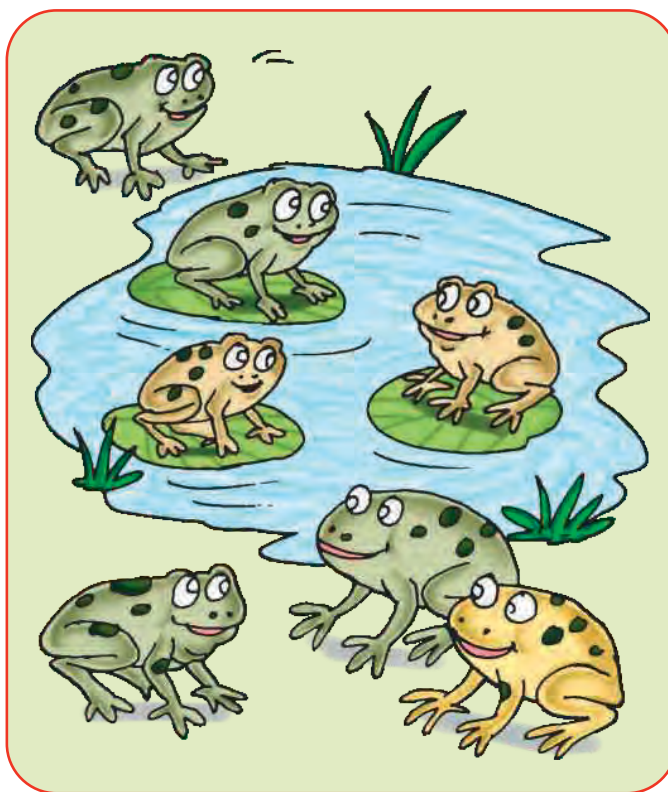


Fox is *inside* the den.
Tiger is *outside* the den.

Colour the balls that are
outside the box.



Tick (✓) the frogs that are
inside the pond.

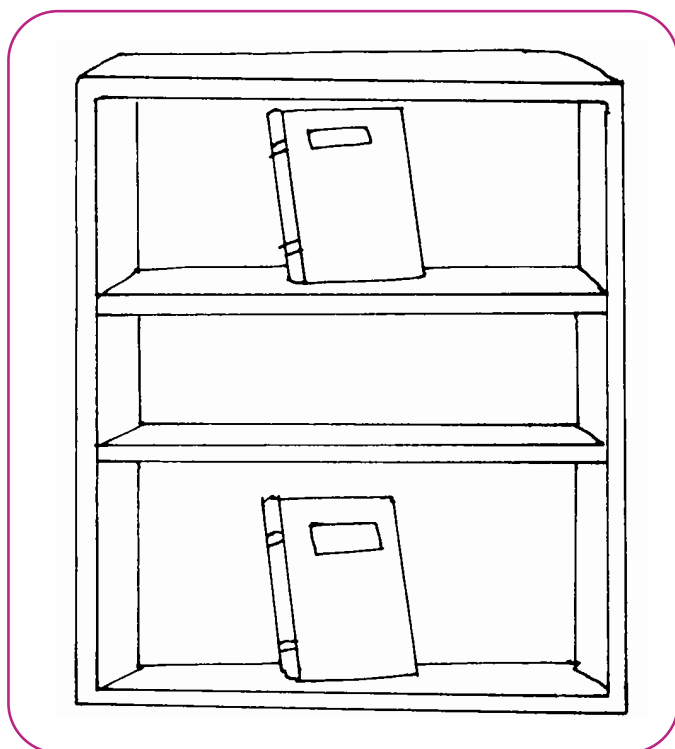


TOP AND BOTTOM



Cup is at the *top* of the cupboard.
Saucer is at the *bottom* of the cupboard.

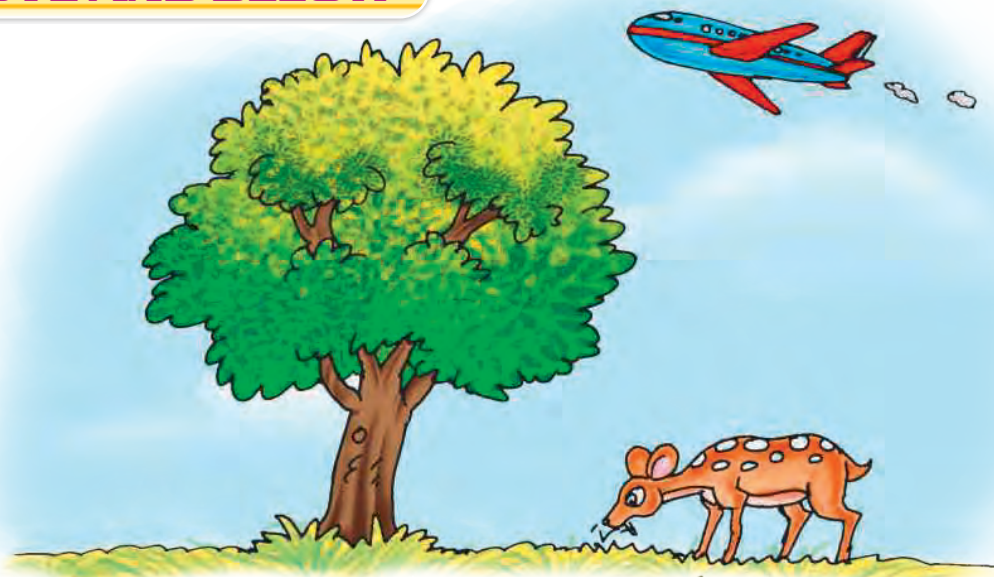
Colour the book on the top shelf blue and the bottom book in pink.



Draw a flower on the top of the plant and an insect at the bottom.



ABOVE AND BELOW



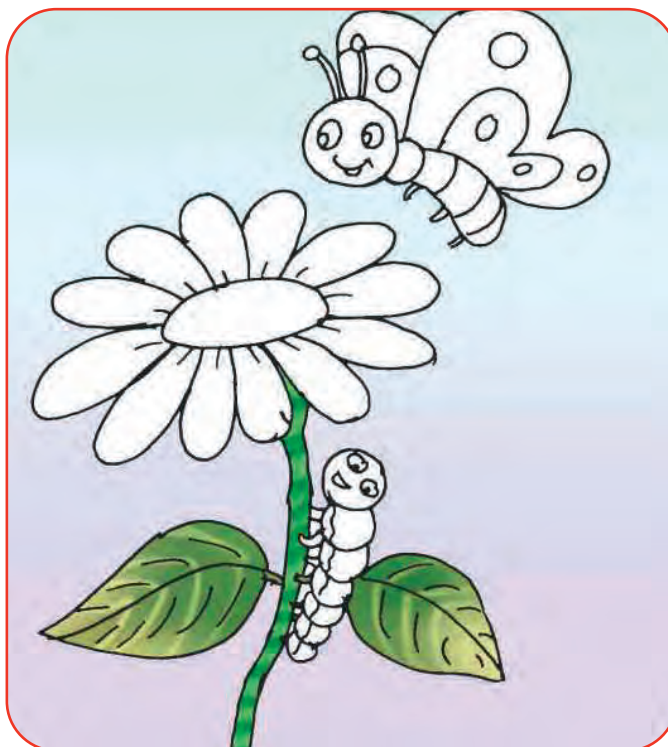
An aeroplane is *above* the tree.

Deer is *below* the tree.

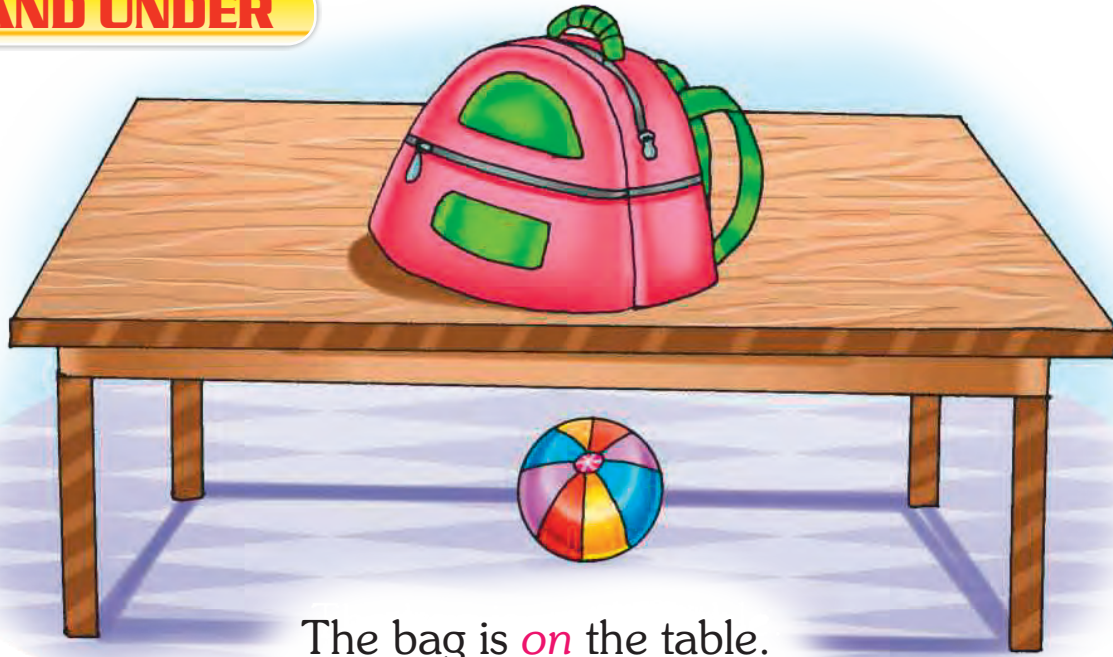
Colour the sun above the boy orange and the rock below brown.



Colour the butterfly above the flower red and the worm below it grey.



ON AND UNDER

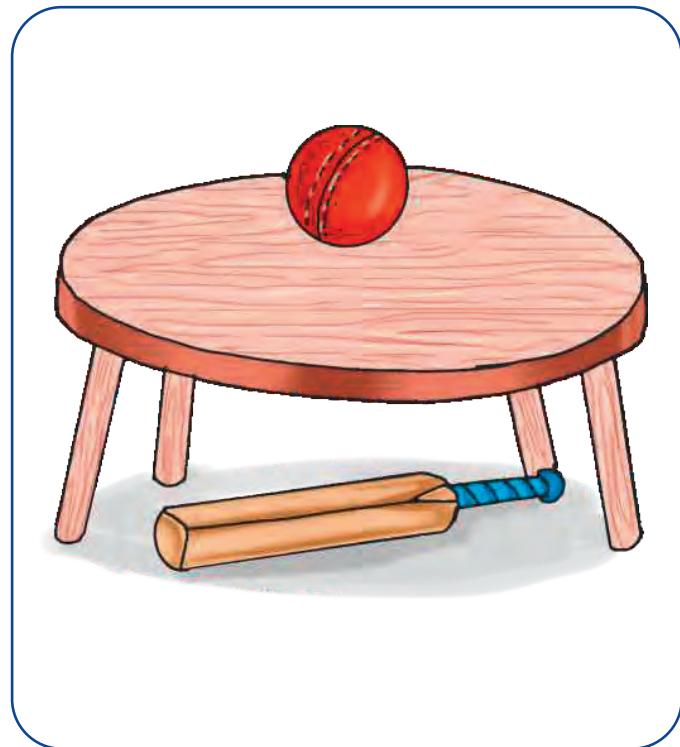


The bag is *on* the table.
The ball is *under* the table.

Draw an apple on the chair and a shoe under the chair.



Tick (✓) the item on the table and cross (✗) that under the table.



NEAR AND FAR

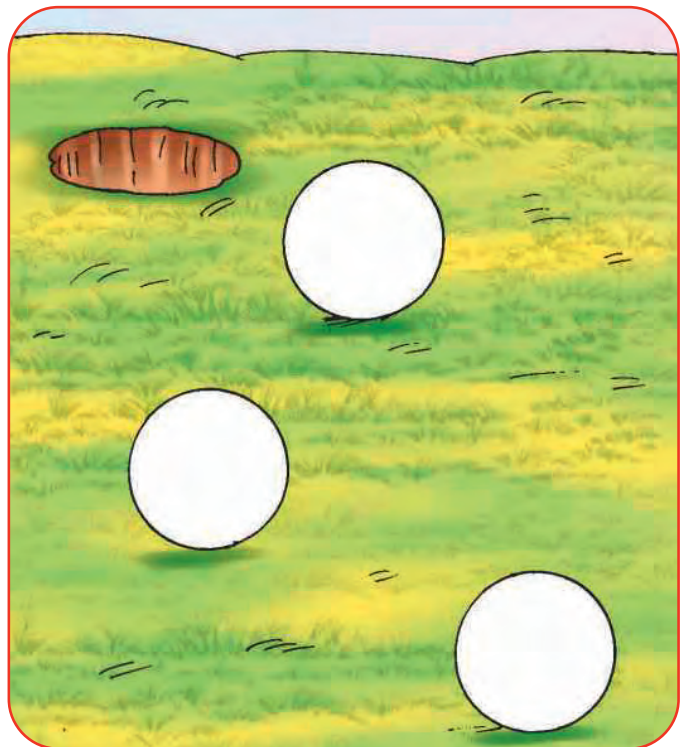


The cycle is *near* the house.
The train is *far* from the house.

Draw a football near the boy and a goalpost far from him.



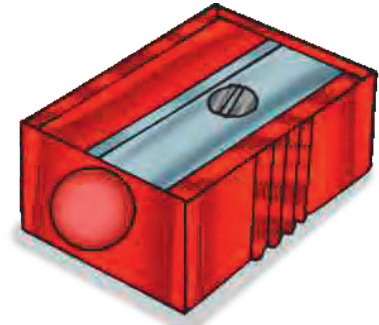
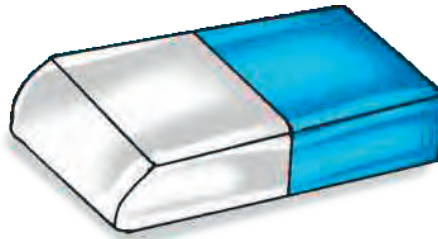
Colour the ball red near the hole and green far from it.



MATHS LAB

Objective : To reinforce the concept of Before, After and Between

Materials Required : A pencil, an eraser and a sharpener



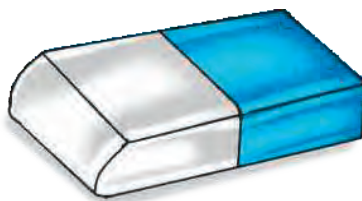
Procedure : Students use pencils, erasers and sharpeners in this activity. Teacher calls out the instructions for the students to demonstrate.

Steps :

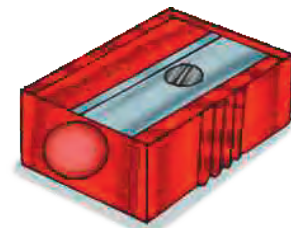
1. Students will follow instructions given by the teacher.
2. Teacher will instruct students as follows :
 - a. Place the sharpener after the pencil.
 - b. Now, place the eraser between the pencil and sharpener.



Pencil
(Before)



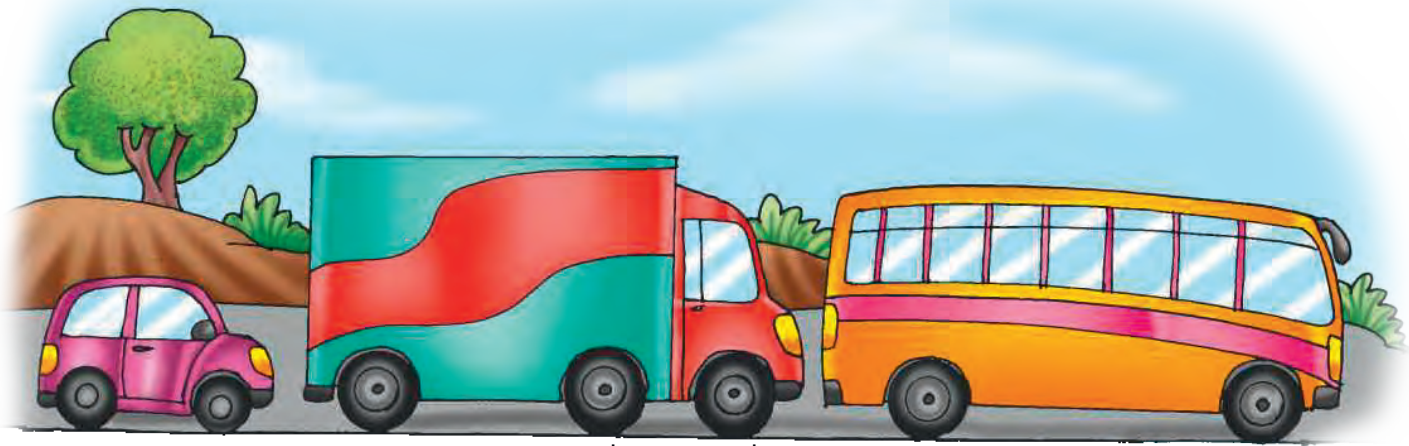
Eraser
(Between)



Sharpener
(After)

3. Give more practice to students, so that they understand the concept.
4. Also note down the time taken by the students.

BEFORE, AFTER AND BETWEEN

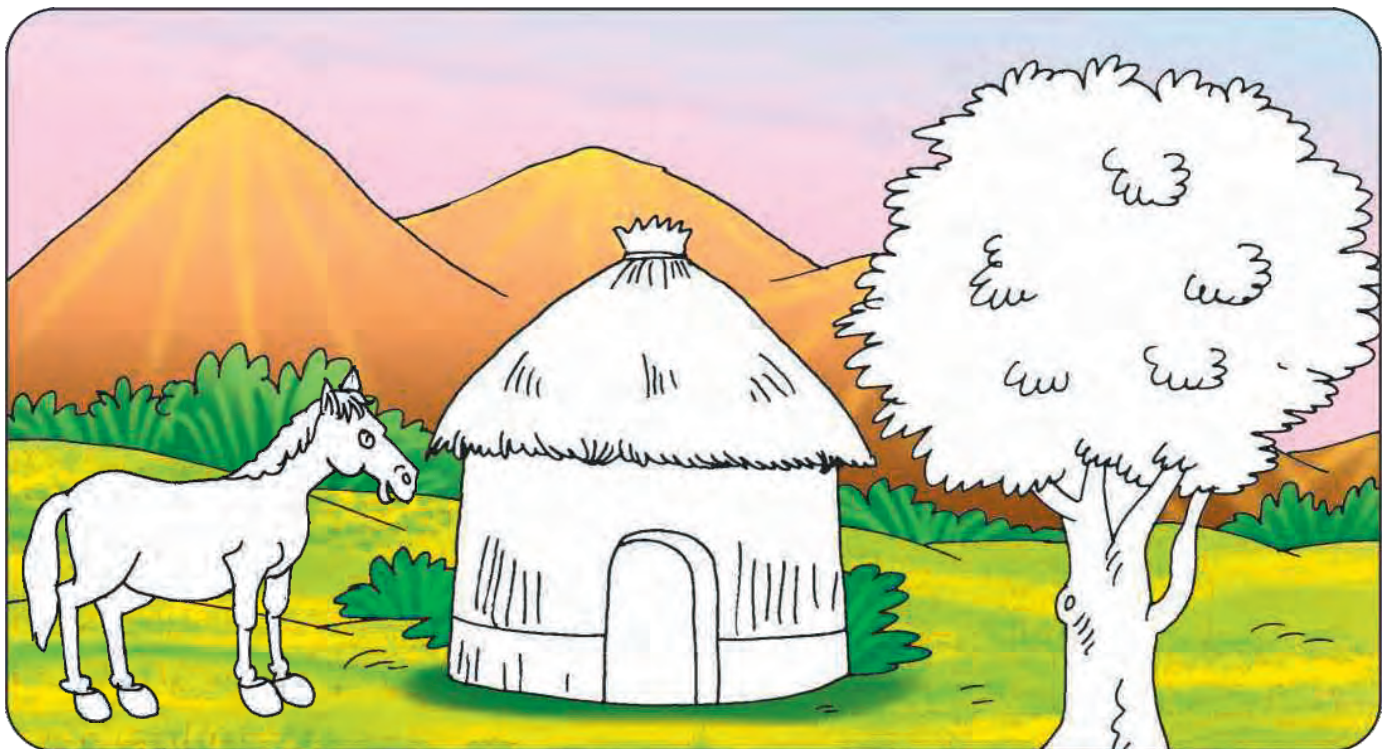


Bus is *before* the truck.

Car is *after* the truck.

Truck is *between* the car and the bus.

Colour the item before the house green and after the house brown. Colour the item between the tree and horse with yellow colour.



WORKSHEET

Colour the big elephant grey.

Colour the tall giraffe yellow and brown.

